

wall mounted drinking fountain

The **Veitch Stainless Steel Wall Mounted Drinking Fountain** is a non-refrigerated single station drinking fountain particularly suited for use in places such as schools, recreation centres and public spaces.

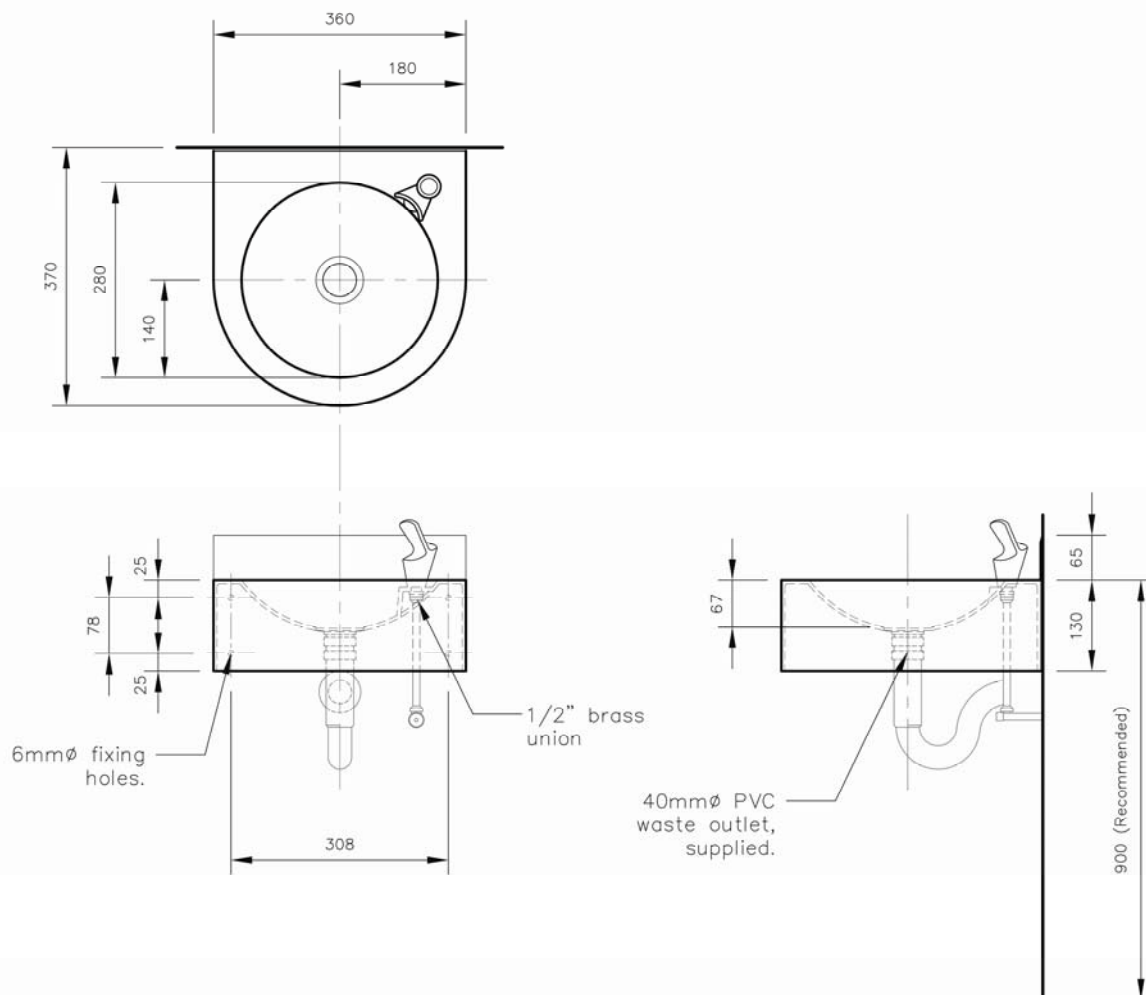
A bubbler and 40mm PVC waste outlet are included with this unit. The sturdy bubbler is vandal resistant, suitable for water pressure up to 400 Kpa and should be connected to the water supply via a stop tap.

The unit features a 65mm upstand to rear and is easily mounted to the wall using the fixing holes in the rear of the skirt. It is manufactured from 1.2mm Grade 304 stainless steel in a complete one-piece construction, ensuring maximum cleanliness and minimal maintenance.

The Veitch Wall Mounted Drinking Fountain is fully recyclable and is 100% Australian made.



The Veitch Wall Mounted Drinking Fountain comes complete with sturdy bubbler and PVC waste outlet. It features a 65mm upstand to rear and one-piece construction for cleanliness.



Designed & manufactured in Australia.

veitch
quality stainless steel products

address: 51 Commercial Drive
Thomastown, Vic. 3074
phone: 03 9465 4131
fax: 03 9465 1478
email: enquiries@veitchstainless.com.au
web: www.veitchstainless.com.au

PRODUCT CODES:
03-2260 Wall mounted drinking fountain

REVISION:
August 2010

**commercial
standard products**

2.5